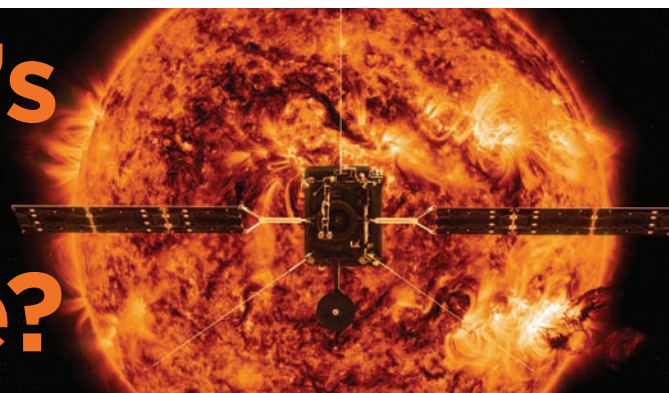




What's Up in Space?



photos courtesy NASA

Mini Fact:

The Parker Solar Probe will be able to collect images of the sun's magnetic poles.

Sixty years ago this month, President Dwight D. Eisenhower signed legislation establishing the National Aeronautics and Space Administration, or NASA. Since then, NASA has sent astronauts to the moon, to float outside spacecraft in outer space, and to live on the International Space Station (ISS). Its explorations of distant planets such as Mars and Saturn have given scientists worlds of new information to analyze.



The Mini Page celebrates this anniversary with an issue about what NASA has in store in the coming months.

InSight

At 4:05 a.m. Pacific time on May 5, NASA's InSight (Interior Exploration using Seismic Investigations, Geodesy and Heat Transport) spacecraft launched from Vandenberg Air Force Base in California.



An artist's idea of InSight working on Mars.

When InSight's lander arrives on Mars in November, it will explore the "red planet" to find out more about its interior, or inside.

Scientists have detected volcanoes on Mars, but they don't

know if the planet experiences Marsquakes. InSight will look for seismic, or shaking, activity. A heat probe will move off the InSight lander and record temperatures. Other instruments will record wind and pressure and the properties, or qualities, of Mars' crust, mantle and core.

Radio science instruments will be able to measure Mars' core by determining how the sun affects the planet's orbit.

The data from InSight's mission will help scientists better understand how the other rocky planets in our solar system were first formed.

Parker Solar Probe

Later this month, NASA will launch the Parker Solar Probe, which will fly closer to the sun than any spacecraft ever has. Over the next seven years, Parker will complete seven "fly-bys" of Venus, using that planet's gravity to pull it closer to the sun.



An artist's idea of Parker flying near the sun.

Parker will enter the sun's corona, or atmosphere, and get within 3.8 million miles of the star. The spacecraft will have to withstand intense radiation and temperatures up to 2,500 degrees Fahrenheit.

As Parker orbits the sun, its instruments will gather data about how energy and heat move through the corona and why solar winds and solar energy particles change speed.

Station transportation

While the International Space Station orbits the Earth, NASA is working on new ways to send crews back and forth. NASA's Space Shuttle program was retired in 2011; since then, Russia's Soyuz spacecraft has been delivering astronauts to the station.

This year, Boeing plans to launch its CST-100 Starliner, and SpaceX will test its Crew Dragon. Soon these spacecraft will



The new spacesuit for the Boeing Starliner is lighter and more flexible than earlier spacesuits. Astronauts will wear the suit traveling to and from the station.

carry crews of four people to and from the space station, which means astronauts will be able to do more research.

Science experiments, food and supplies are sent to the space station on four cargo spacecraft: the U.S.'s Orbital ATK Cygnus and SpaceX

Dragon, Japan's HTV-II, and Russia's Progress.

Resources



On the Web:

- go.nasa.gov/2x8gMXt
- go.nasa.gov/2x70kGV
- go.nasa.gov/2s63c1e

At the library:

- "Curiosity: The Story of a Mars Rover" by Markus Motum
- "My Journey to the Stars" by Scott Kelly

The Mini Page® © 2018 Andrews McMeel Syndication

Try 'n' Find

Words that remind us of NASA and space are hidden in this puzzle. Some words are hidden backward or diagonally, and some letters are used twice. See if you can find:



- ANNIVERSARY,
- ASTRONAUT, CORONA,
- DATA, DISTANT, ENERGY,
- EXPLORATION, GRAVITY,
- HEAT, INSIGHT, INTERIOR,
- MARS, MOON, NASA,
- PARKER, PLANET,
- PROPERTIES, SATURN,
- SEISMIC, SPACE, SUN.

W M S A T U R N O E C A P S P
 F T S S K I N T E R I O R H L
 M A R S Y R A S R E V I N N A
 N E X P L O R A T I O N M C N
 E N E R G Y T I V A R G Q O E
 T T E P R O P E R T I E S R T
 A S T R O N A U T A T A D O C
 E T N A T S I D T H G I S N I
 H W Z N U S E I S M I C T A W
 N O O M S N M R E K R A P L V

Cook's Corner

Banana Bites

You'll need:

- 1 medium-large banana
- 4 heaping tablespoons reduced-fat whipped topping
- 2 tablespoons peanut butter
- 14 to 16 chocolate chips



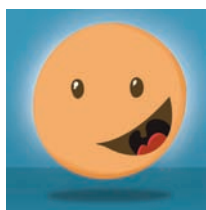
* You'll need an adult's help with this recipe.

What to do:

1. Slice banana into 14 to 16 rounds.
2. Mix together whipped topping and peanut butter until well-blended.
3. Put a small dollop of mixture on top of each banana round.
4. Top each with a chocolate chip.
5. Chill in refrigerator for one hour before serving. Serves 2.

7 Little Words for Kids

Use the letters in the boxes to make a word with the same meaning as the clue. The numbers in parentheses represent the number of letters in the solution. Each letter combination can be used only once, but all letter combinations will be necessary to complete the puzzle.



1. contain (7) _____
2. computer in your pocket (10) _____
3. baby cow (4) _____
4. person guiding a team (5) _____
5. a year has 12 (6) _____
6. late part of the day (7) _____
7. Thanksgiving sauce (5) _____

NE	CO	RTP	CA
HO	EVEN	THS	INCL
MON	UDE	ING	GR
AVY	LF	SMA	ACH

Answers: include, smartphone, calf, coach, months, evening, gravity.

Mini Jokes



Parker: What kind of music do planets sing?
Star: Neptunes!

Eco Note



The Earth's global average temperature combines the temperatures of all the hot places, all the cold places, and all the places in between. Even a small rise in Earth's global temperature means melting ice at the North and South Poles. It means rising seas. It means flooding in some places and drought in others. It can mean big changes for humans too.

adapted from climatokids.nasa.gov

Thank You



The Mini Page thanks Stephanie Schierholz, acting press secretary, NASA, for help with this issue.

Teachers: For standards-based activities to accompany this feature, visit: bit.ly/MPstandards. And follow The Mini Page on Facebook!



Books from The Mini Page are wonderful resources and make great gifts! See all of our Mini Page products at MiniPageBooks.com, or call 800-642-6480 for more information. Mail payment to: Andrews McMeel Universal, Mini Page Books, 1130 Walnut, Kansas City, MO 64106. Include \$4.00 shipping and handling per order.



Original Mini Page format and includes Mini Spy puzzles.

SALE \$6.00 \$10.95
SALE \$7.00 \$15.99

The Mini Page® © 2018 Andrews McMeel Syndication

©2017 Blue Ox Technologies Ltd. Download the app on Apple and Amazon devices.